

M-Bus Digital Master Series

High end M-Bus master interface

For up to 250 slaves

Sophisticated signal processing

Transmission rate up to 38400 baud

RS232, RS485 or current loop options

Bus overcurrent and lightning protection

Repeater option for network extension



The family of digital M-Bus master interfaces is ideally suited for large M-Bus installations with up to 250 slaves. Due to the modular design models with RS232, RS485 or current loop physical interface are available. Thus the series provides a suitable solution for different host controller systems.

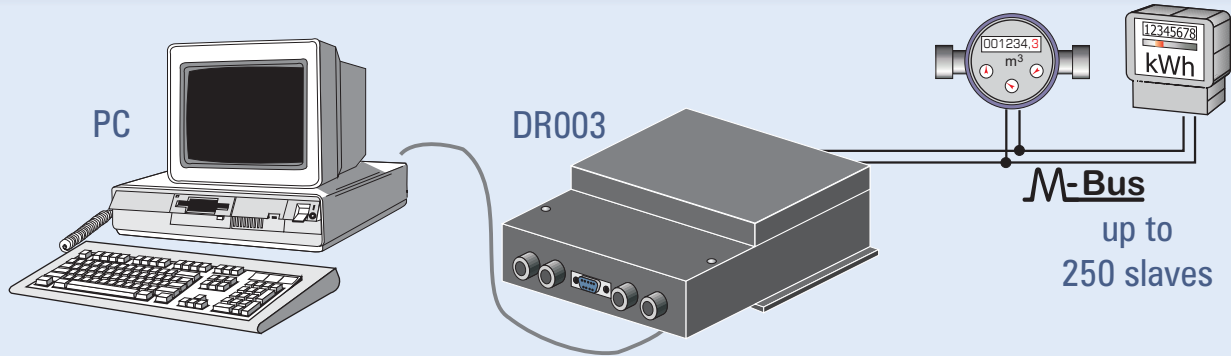
With one member of the family, the DR007, nearly unlimited network extensions and unrestricted number of slaves are possible. It offers a real repeater function, which allows to put devices in chain without signal distortion.

The optional internal or external modem allows scanning of all measured data from any location and without need of a local PC.

Relay

PadMess

Unbeaten and flexible: Digital Master family



Function of the Digital-Master

The devices in the digital master series are M-Bus master interfaces for networks with up to 120 or 250 slaves. Short circuit protection, collision detection, control and correction of bit times are performed by a signal processor. The high transmission rate of maximum 38400 baud also allows time-critical applications with the M-Bus system. A number of different LED indicate the state of the M-Bus network and data communications.

The range offers various interfaces:

RS232 (standard), RS485 (large distance between control computer and digital master), Current Loop (20 mA / TTY) and internal or external modem.

Available versions

- | Available versions | Art.-No. |
|--------------------------------|----------|
| 1. RS232C, 250 unit loads | DR003 |
| RS232C, 120 unit loads | DR004 |
| 2. RS485, 250 unit loads | DR005 |
| RS485, 120 unitloads | DR006 |
| 3. Repeater for bus extension | DR007 |
| 4. RS232C and integrated modem | DR009 |
| 5. Current Loop active | DR011A |
| Current Loop passive | DR011P |

Up to 250 unit loads can be connected to the devices from no. 3 to 5.

Technical data

Operating voltage:	42V DC	Galvanic insulation to M-Bus	
Power input:	max. 25 W	Echo supression	
M-Bus voltage (without load):	40V	Overcurrent switch off	
Max. M-Bus quiescent current:	375mA (250 unit loads)	Collision detect with break-signal	
	180mA (120 unit loads)	Bit-recovery	
Internal bus resistance:	approx. 10Ω	Temperature range:	0 .. 55 °C
Overcurrent threshold :	500mA (250 unit loads)	Housing:	anthracite plastic , protection type IP52
	250mA (120 unit loads)		H x W x D = 200 x 240 x 85
			wall mounted
Transmission speed	RS232C: 300 .. 38400 baud	Power supply unit:	230V~input, 42VDC output
	RS485: 300 .. 9600 baud		alternatively plug-in or wall
	Current Loop: 300 .. 9600 baud		mounted with fix connection
	Int. Modem: 300 .. 2400 baud		

Order information

Art. No.. see above (available versions)

Delivery contains:

plug-in power supplyl 42VDC

Also available on request :

wall mounted power supply 42VDC:

add -WNT to Art. No.

Accessories

M-Bus modem for level converter	Art. No. MOD003
M-Bus readout software:	
Look@M-Bus for Windows95/98/NT	Art. No. SW006
LocalService@M-Bus (time module)	Art. No. SW006Z
M-Bus OLE Server for Windows95/98/NT	Art. No. SW005

Relay

Reinecke Elektronikentwicklung und Layout GmbH
Stettiner Str. 38
D-33106 Paderborn
www.relay.de

Tel.: 05251 / 1767-0
Fax: 05251 / 1767-20
EMail: info@relay.de

PadMess

Meß- und Kommunikationstechnik GmbH
Stettiner Str. 38
D-33106 Paderborn
www.padmess.de

Tel.: 05251 / 1769-0
Fax: 05251 / 1769-20
EMail: info@padmest.de